

## **Week 4: Collaboration**

**Paul Lindsey**

**Roydon Woodford**

**Henry Woide Godfrey**

**Change**

## Project concept

A longitudinal photo documentation of changing landscapes and objects that is geographically dispersed and incorporates different perspectives of change through the use of imagery collected from GoogleStreet Maps, Satellites, Drones, printed matter and recent photographs.

Contrasting rate of change across geographies highlights a number of concerns for those areas undergoing significant transformation, loss of natural habitat, erasing of cultural heritage, environmental pollution and reduction of green areas/quality of living environment.

Collaboration between three geographically separated photographers each utilising a different method for recording change is the starting point for determining if the concept has merit and a narrative can be created based on the high level outline.

The intention is to compare imagery side by side, how that should be sequenced to take into account different geographies or how to represent rate of change is to be developed further. The current imagery and layout is proof of concept.

Google Streetview has been used in the US to analyse and characterise neighbourhoods to examine associations between the environment and population health. This research is not easily accessible but it does demonstrate that the imagery contains powerful information that can be used to describe and analyse our living environment. These visual records documenting longitudinal change are easily accessible however there seems to be limited effort to promote this information and create broader awareness. (Based on limited research to date).



























Sainsbury's August 2014



Sainsbury's May 2015



Sainsbury's October 2016



Sainsbury's June 2017



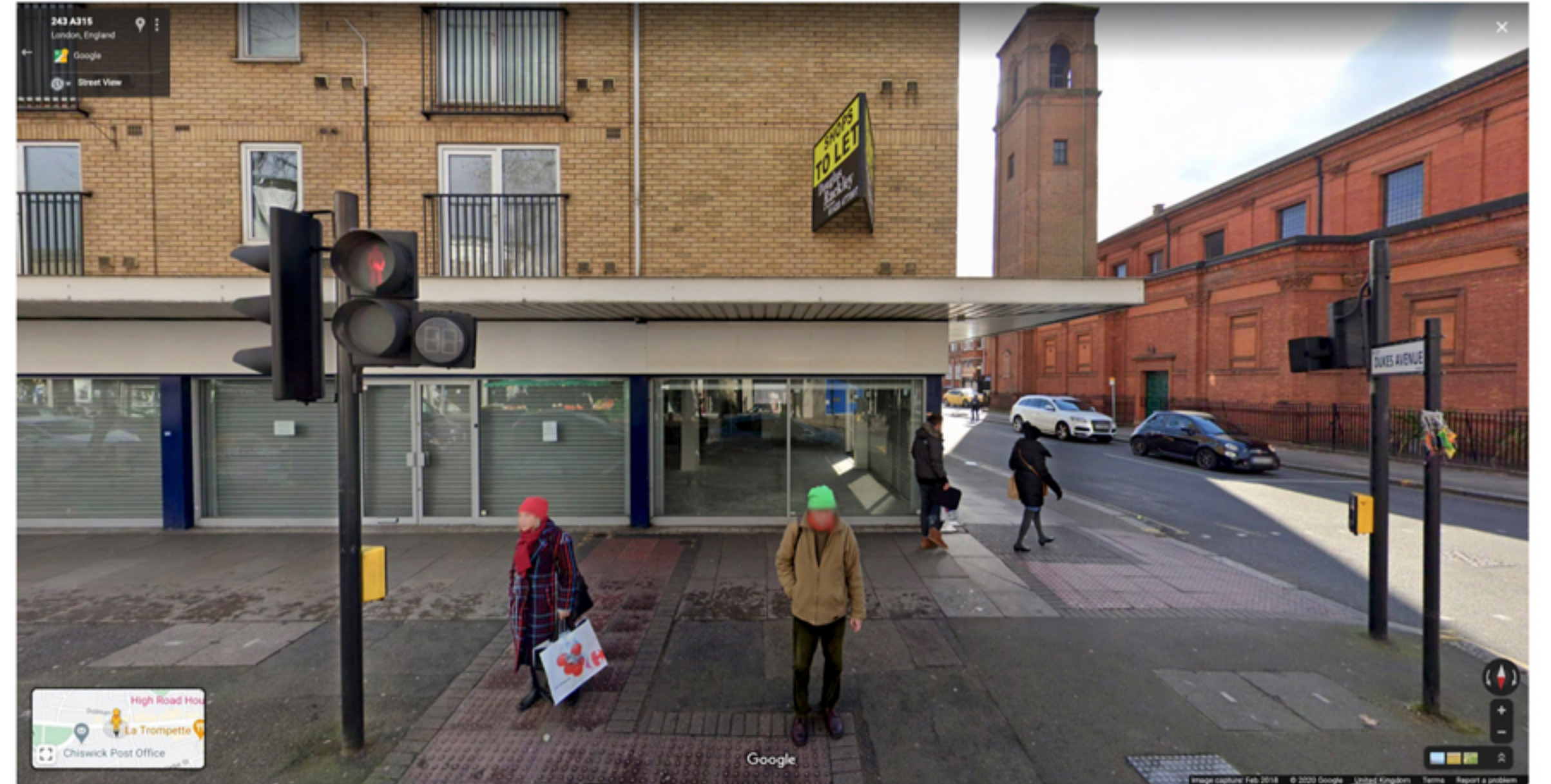
Sainsbury's April 2018



Sainsbury's July 2019



Carphone Warehouse May 2015



Carphone Warehouse February 2018



Carphone Warehouse April 2019



Blockbusters\_August\_2014



Blockbusters\_September\_2015



Blockbusters\_July\_2016



Blockbusters\_October\_2016



Blockbusters\_June\_2017



Blockbusters\_April\_2018



Blockbusters\_July\_2019



Blockbusters\_August\_2020

**NGUYEN, Quynh C. 2019. 'Using Google Street View to Examine Associations between Built Environment Characteristics and U.S. Health Outcomes'. Preventive Medicine Reports 14, [online], 100859. Available at: <https://doi.org/10.1016/j.pmedr.2019.100859> accessed 15 Oct 2020].**

**Swanage Past, David Lewer and Dennis Smale Phillimore & Co Ltd Chichester  
Google Street View**